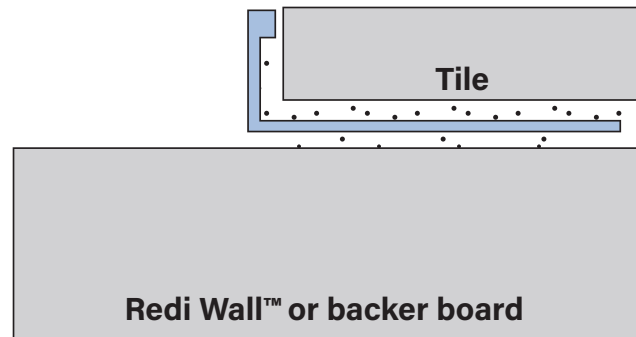
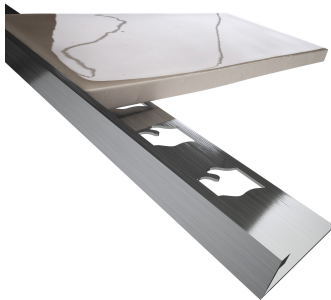




TILE EDGE TRIM - INSTALLATION INSTRUCTIONS

Note: These instructions are specifically for installing L-shaped tile trim. Please ensure that you have selected the appropriate profile according to the thickness of your tiles and thinset.



1. Make sure that the tiled covering is completed up to the area where the trim will be installed.
2. Using a trowel, apply thinset mortar along the edges of the tiled surface where you intend to position the L-shaped trim. Ensure that the thinset mortar layer is even and covers the entire area where the trim will be installed.
3. Take the L-shaped tile trim and align it with the thinset mortar area. Ensure the perforated anchoring leg of the trim is securely embedded into the thinset mortar by pressing it firmly in place.
4. After positioning the trim, trowel additional thinset mortar over the perforated anchoring leg of the trim. This step helps to ensure that the trim is fully embedded and provides better stability. Make sure the thinset mortar covers the perforated anchoring leg completely.
5. Begin placing the tiles adjacent to the installed trim. Embed tiles into the thinset mortar, ensuring that the tiled surface sits flush with the top of the trim. It is important to ensure that the trim is not higher than the tiled surface. Ideally, the trim should be up to approximately 1/32" lower than the tiled surface.
6. Continue tiling the area following your preferred tiling pattern or design. Make sure each tile is properly aligned and securely embedded in the thinset mortar.
7. Once the thinset mortar has fully cured according to the manufacturer's instructions, you may choose to apply grout between the tiles. Follow the grouting instructions carefully, ensuring that the grout is evenly applied and any excess is wiped away.
8. Clean the tiled surface and remove any adhesive or grout residue using a damp cloth or sponge. Allow the adhesive and grout to cure fully before subjecting the tile area to heavy use or cleaning.

436 East 36th Street, Charlotte, NC 28205 | 800.232.6156 | www.tileredi.com | sales@tileredi.com

Tile Edge Trim provided by Great Lakes Tile Products

Tile Redi® trademarks and logos are owned by and the Intellectual Property of Tile Redi, LLC.

©2023 Tile Redi, LLC. All Rights Reserved. PATENT: www.TileRedi.com/PatentMarkings