

1. Product

- . Product List
- . Specification Sheets

2. UL / ULC Certifications <sup>UL</sup>

- . ICC/ANSI A117.1-98
- . B45-0-02-B45-5-02

3. Product Testing

- . Drain Fitting Test
- . Point Impact Load Test
- . Threshold and Bottom Test
- . Radii Load Test
- . Ignition Test

4. UL <sup>UL</sup> 1 Hr and 2 Hr Fire Penetration Test

- . F-C-2351 for Wood Substrate
- . F-A-2175 for Concrete Substrate

5. Bayer Material Physical Properties

6. Installation Guide



## Product List

---

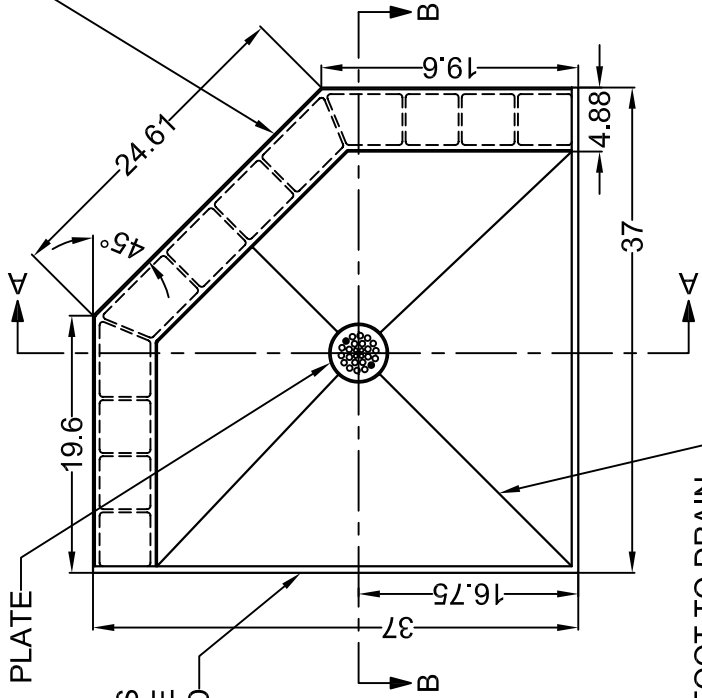
Tile Redi offers a complete line of Tile Ready shower pans. Products include our Standard model shower pans, ADA model shower pans, Custom shower pans and Modular shower pans, curbs and benches.

- A. Standard Model Shower Pans
- B. ADA Model Shower Pans
- C. Custom Shower Pans
- D. Modular shower pans, curbs and benches

1. 3737
2. 3737 Neo
3. 3748
4. 3360 Left
5. 3360 Right
6. 4848
7. 4837

ADJUSTABLE THREADED  
DRAIN TOP WITH 4"  
ROUND CHROME POLISHED  
PLATE

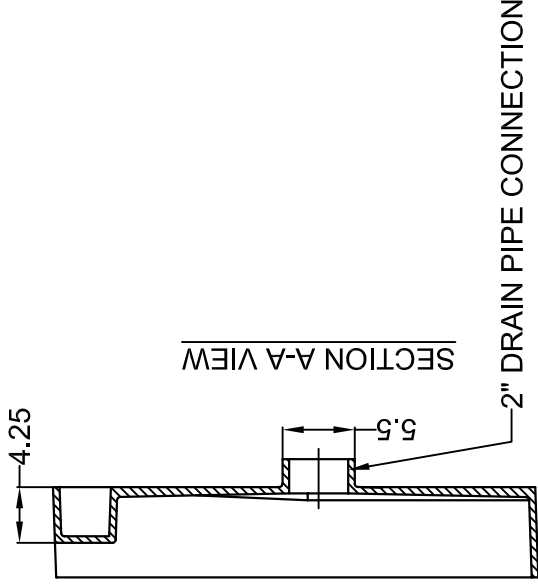
6" SIDE WALLS  
1/2" WIDE TO ACCOMODATE  
1/2 WALL BOARD



TOP VIEW

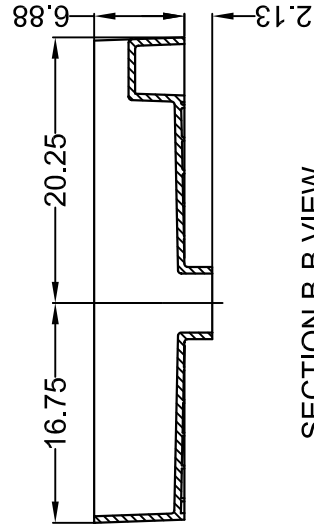
1/4" PITCH PER FOOT TO DRAIN

INTEGRATED THRESHOLD (CURB)  
DESIGNED AND PRODUCED WITH  
UNDERSIDE RIBBING TO SUSTAIN WEIGHT



SECTION A-A VIEW

2" DRAIN PIPE CONNECTION



SECTION B-B VIEW



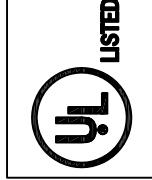
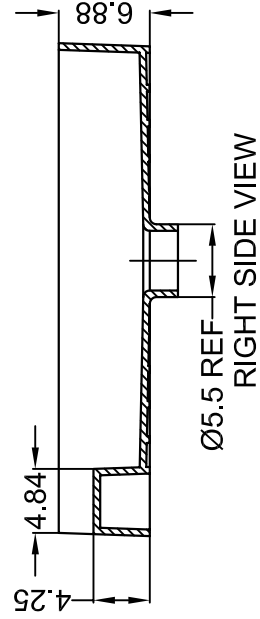
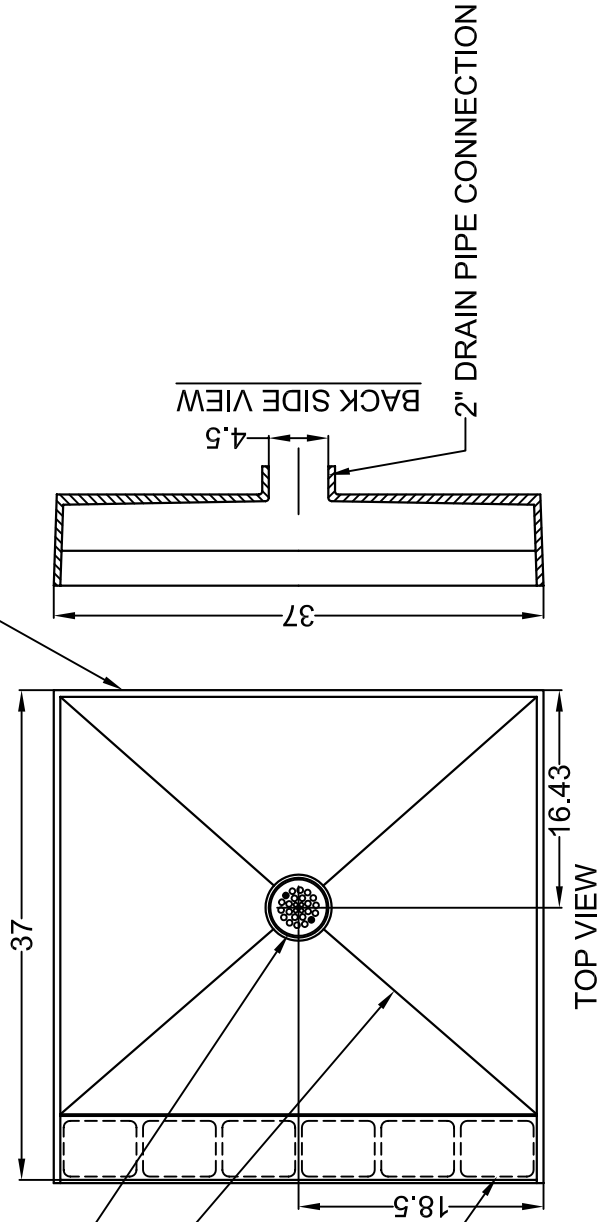
MODEL # 37 NEO	CONTACTS
CERTIFICATION/STANDARDS	toll free: (800) 232-6156
ICC/ANSI A117.1:98	tel: (954) 323-0125
ANSI 2.124	fax: (954) 344-8064
ASTM F462-79	

6" SIDE WALLS  
1/2" WIDE TO ACCOMMODATE  
1/2 WALL BOARD

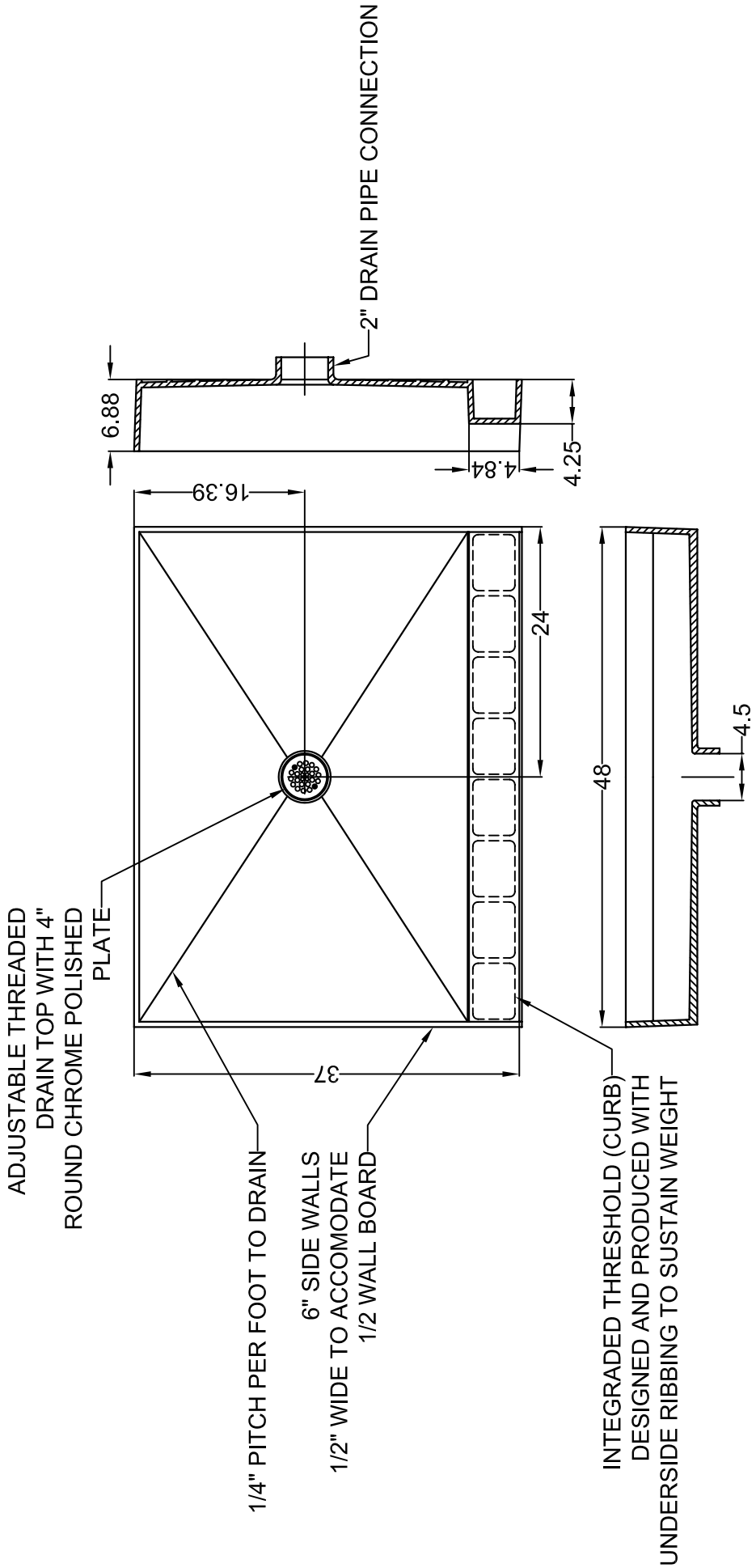
ADJUSTABLE THREADED  
DRAIN TOP WITH 4"  
ROUND CHROME POLISHED  
PLATE

1/4" PITCH PER FOOT TO DRAIN

INTEGRATED THRESHOLD (CURB)  
DESIGNED AND PRODUCED WITH  
UNDERSIDE RIBBING TO SUSTAIN WEIGHT

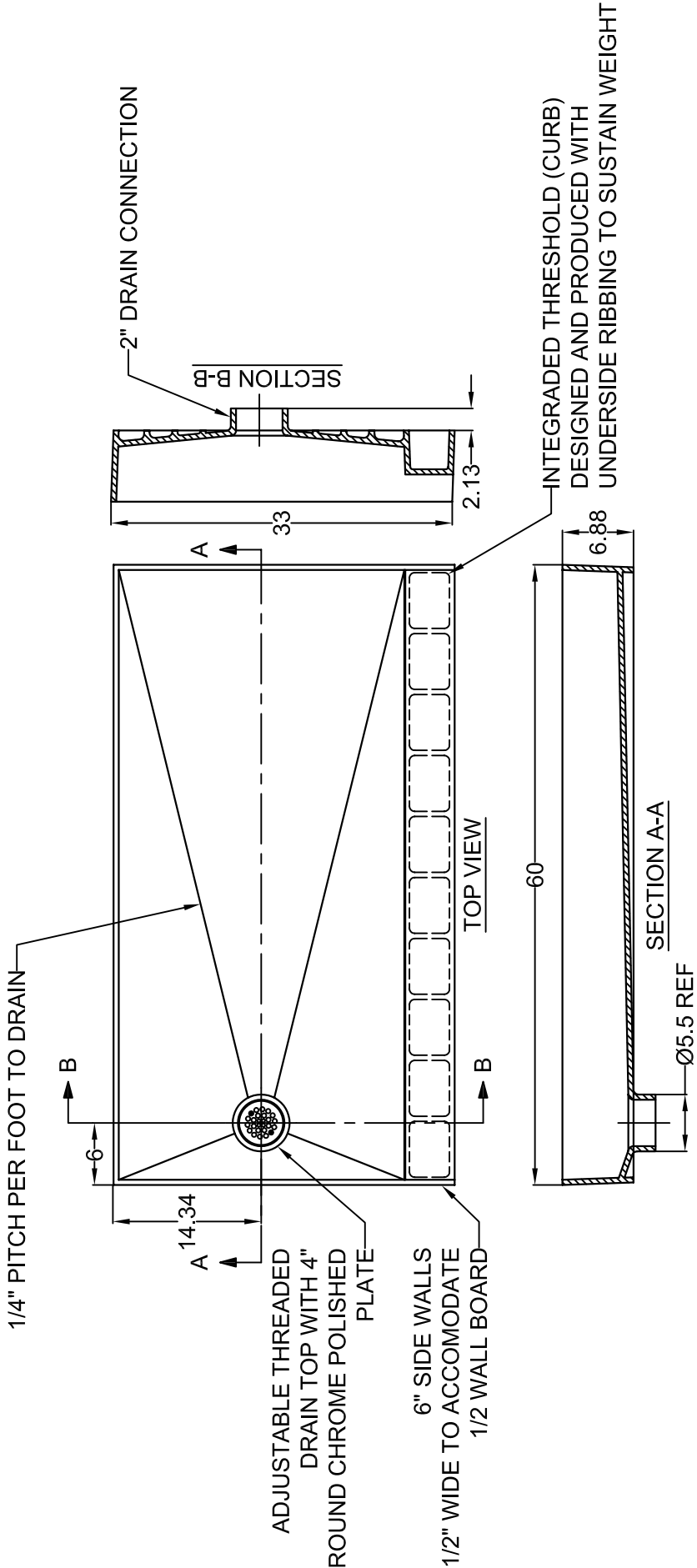




MODEL # 3737	CONTACTS
CERTIFICATION/STANDARDS	toll free: (800) 232-6156
ICC/ANSI A117.1:98	tel: (954) 323-0125
ANSI 2.124	fax: (954) 344-8064
ASTM F462-79	



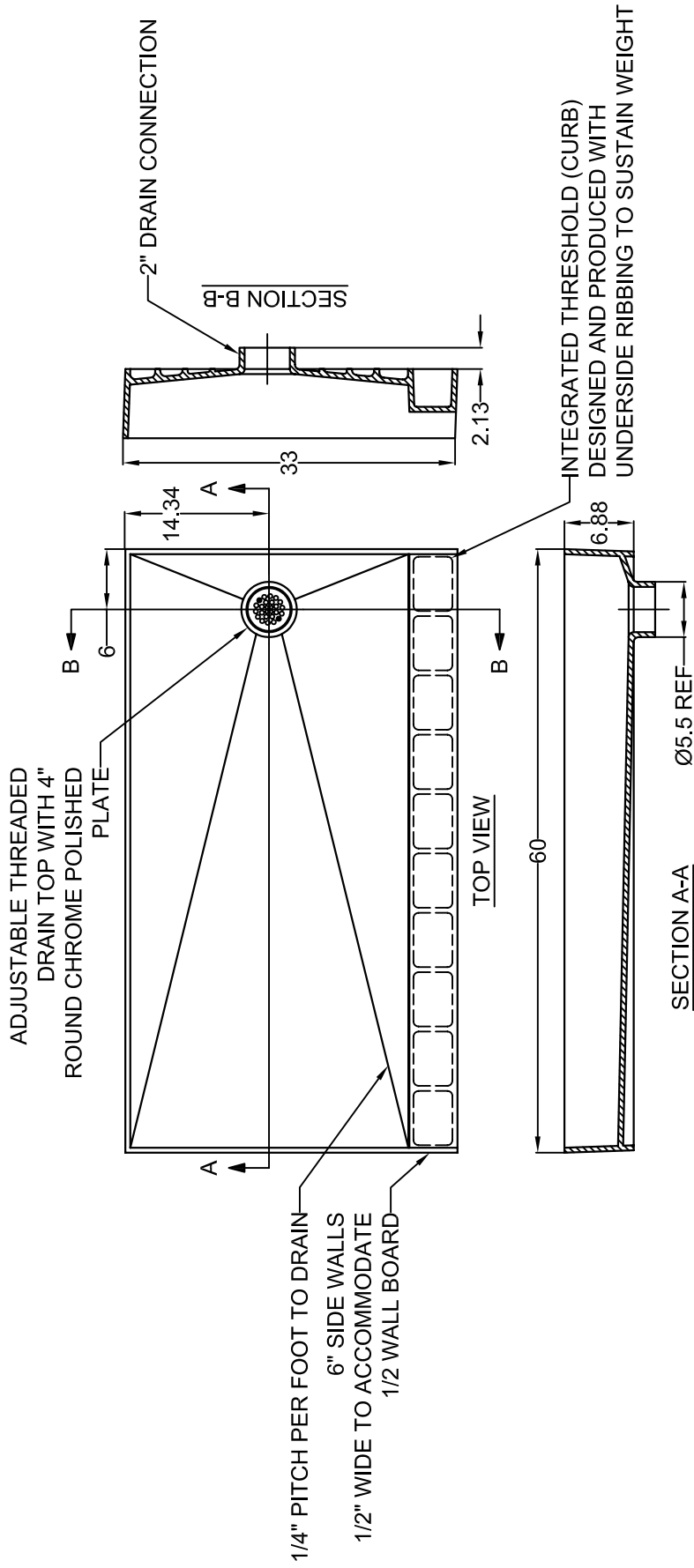
MODEL # 3748	CONTACTS
CERTIFICATION/STANDARDS	ICC/ANSI A117.1.98 ANSI A117.1.24 ASTM F462-79
	toll free: (800) 232-6156 tel: (954) 323-0125 fax: (954) 344-8064







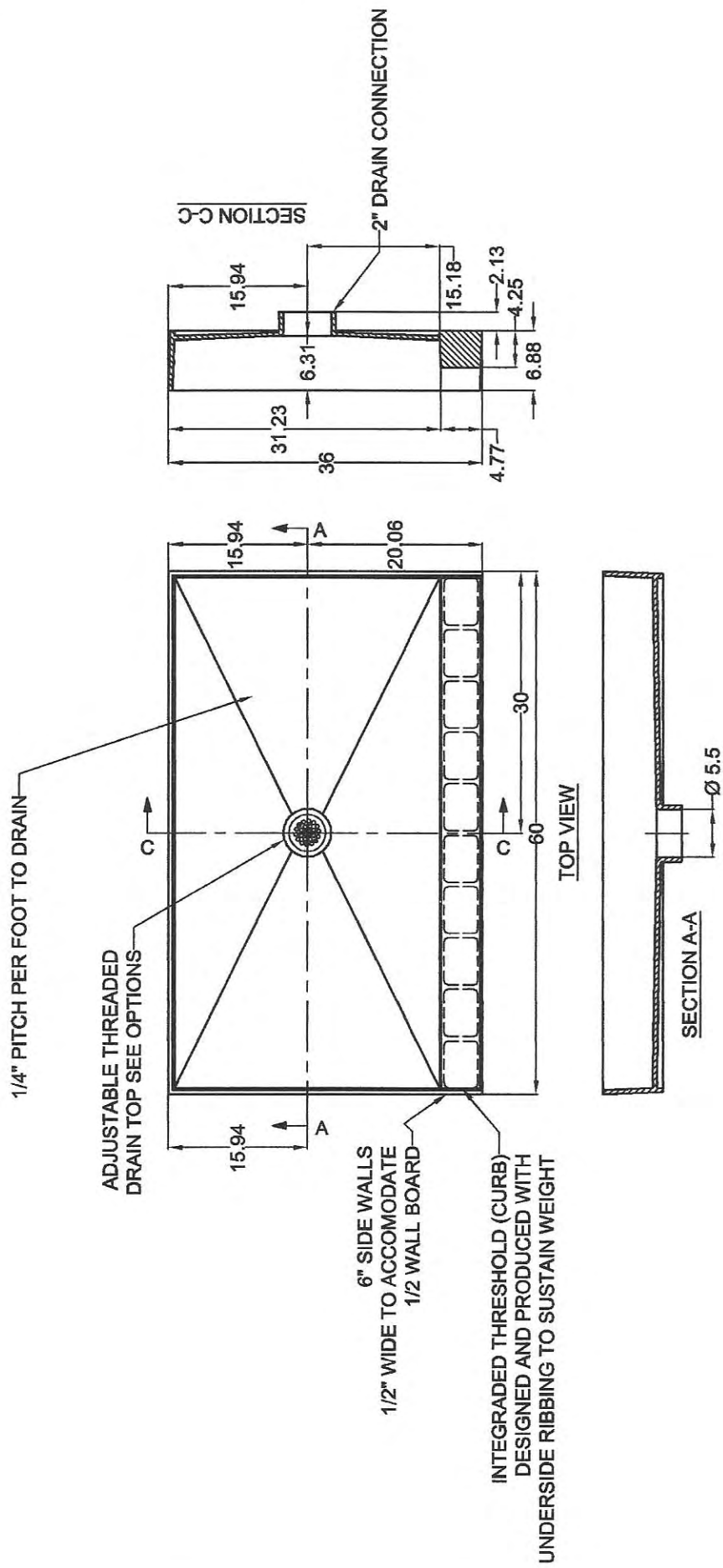
	MODEL # 3360L	
	CERTIFICATION/STANDARDS ICC/ANSI A117.1-98 ANSI 2.124 ASTM F462-79	

Waterproof Shower Module

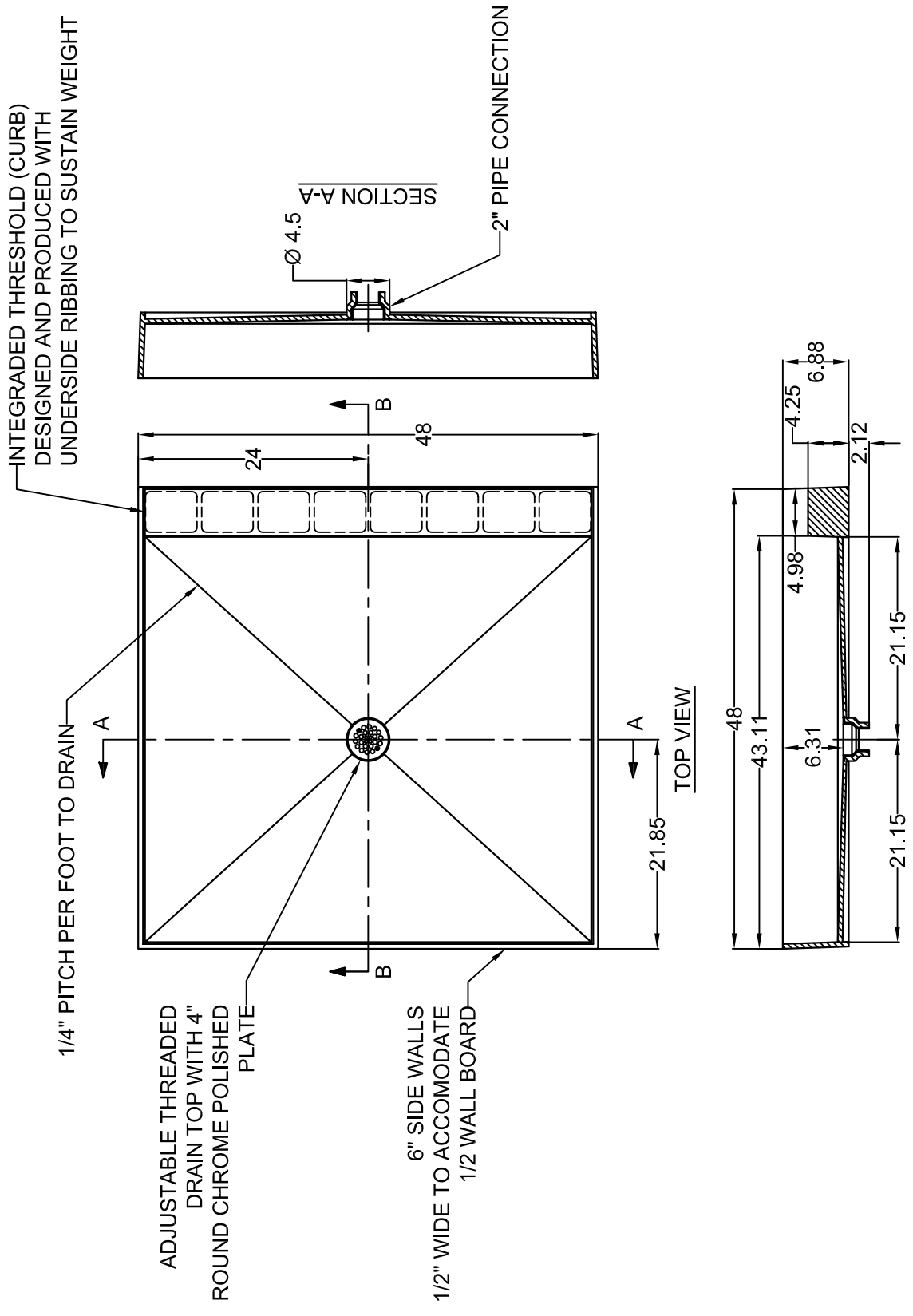


	MODEL # 3360R	
	CERTIFICATION/STANDARDS ICC/ANSI A117.1.98 ANSI A117.1.24 ASTM F462-79	

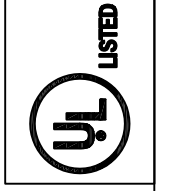
Waterproof Shower Module



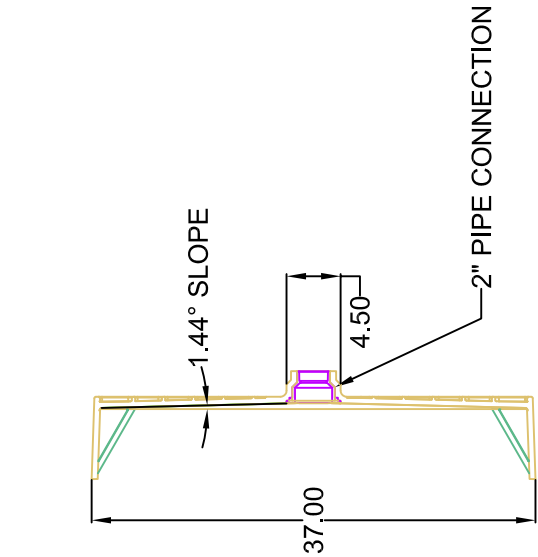
DETAIL #1	MODEL # 3660C	CONTACTS
APPROVED BY: / /	CERTIFICATION/STANDARDS ICC/ANSI A117.1.98 ANSI 2.124 ASTM F462-79	toll free: (800) 232-6156 tel: (954) 323-0125 fax: (954) 344-8064
DATE: / /	<b>UL LISTED</b>	



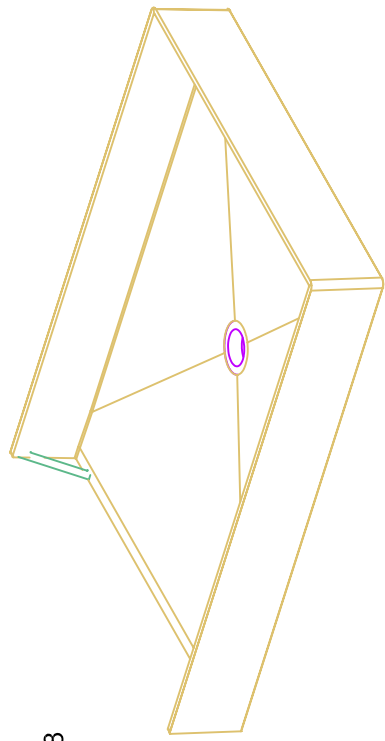
MODEL # 4848	CONTACTS
CERTIFICATION/STANDARDS	toll free: (800) 232-6156 tel: (954) 323-0125 fax: (954) 344-8064
ICC/ANSI A117.1-98 ANSI 2.124 ASTM F462-79	



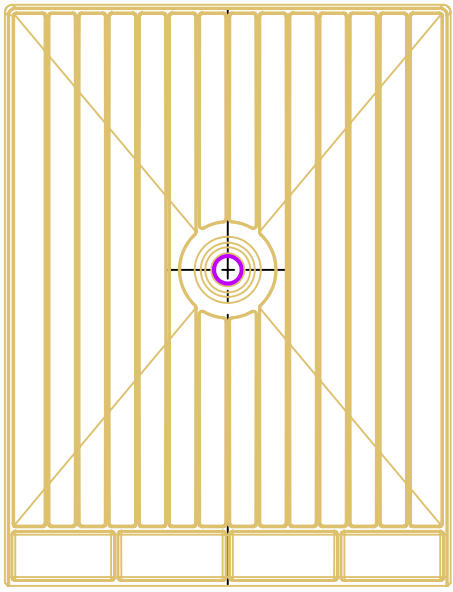
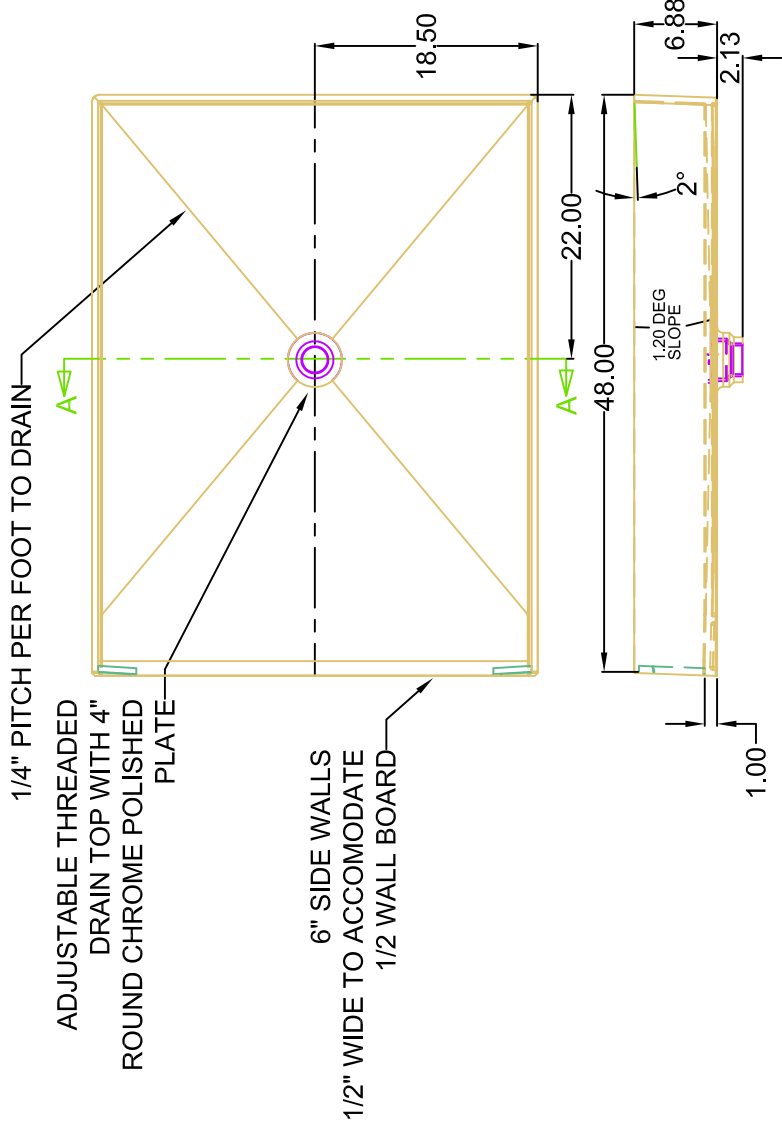
SECTION B-B



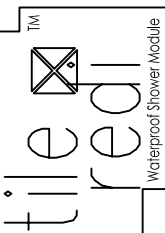
SECTION A-A



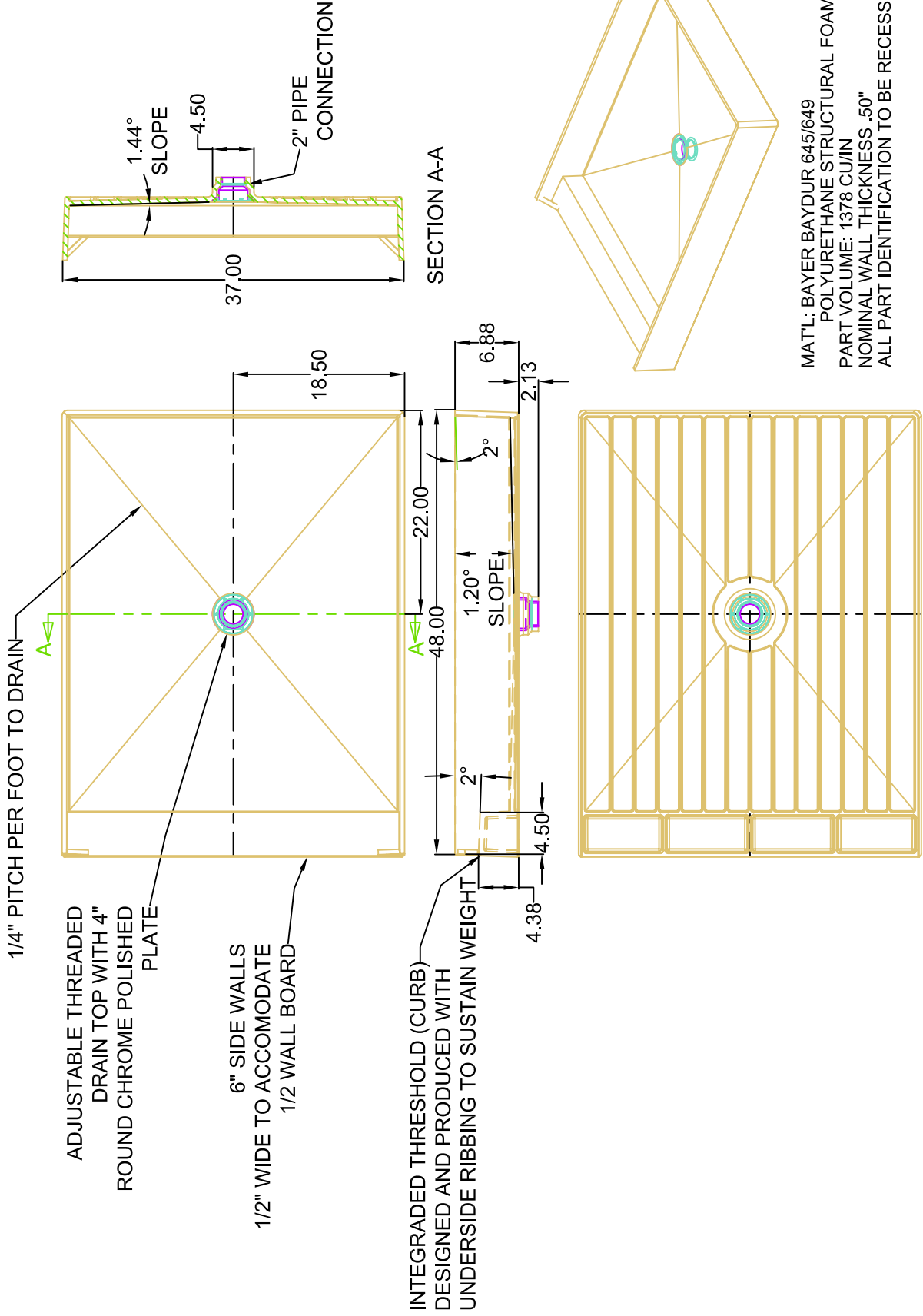
MAT'L: BAYER BAYDUR 645/649  
 POLYURETHANE STRUCTURAL FOAM FOR (RIM)  
 PART VOLUME: 1215 CU/IN  
 NOMINAL WALL THICKNESS .50"  
 ALL PART IDENTIFICATION CHARACTERS  
 TO BE RECESSED .04



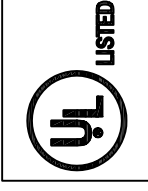
MODEL # 4837BASIN 120706	CONTACTS
CERTIFICATION/STANDARDS	ICC/ANSI A117.1.98 ANSI 2.1.24 ASTM F462-79
	toll free: (800) 232-6156 tel: (954) 323-0125 fax: (954) 344-8064



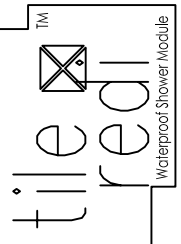
Waterproof Shower Module



MAT'L: BAYER BAYDUR 645/649  
 POLYURETHANE STRUCTURAL FOAM FOR (RIM)  
 PART VOLUME: 1378 CU/IN  
 NOMINAL WALL THICKNESS .50"  
 ALL PART IDENTIFICATION TO BE RECESSED .04



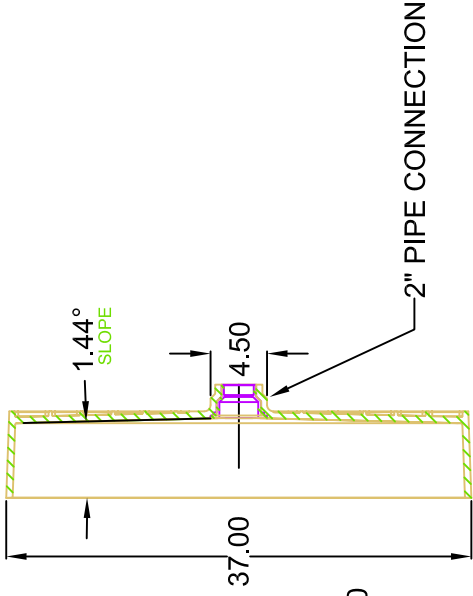
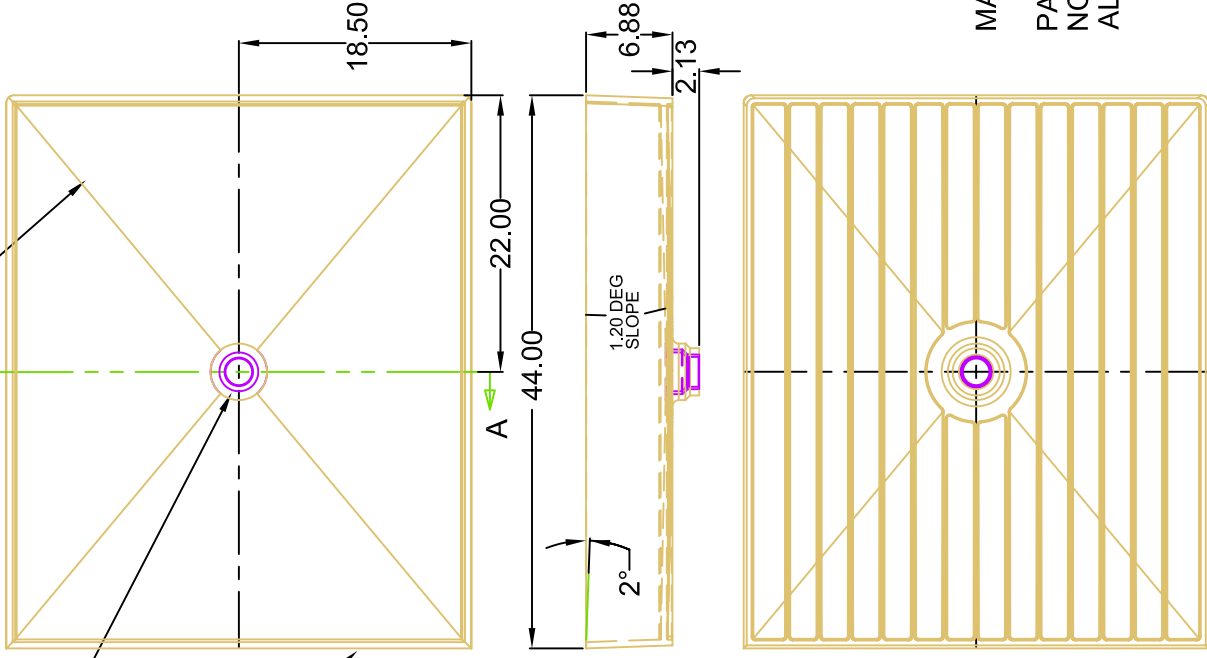
MODEL # 4837CURB	CONTACTS
CERTIFICATION/STANDARDS	ICC/ANSI A117.1-98
	ANSI 2.124
	ASTM F462-79
	toll free: (800) 232-6156
	tel: (954) 323-0125
	fax: (954) 344-8064



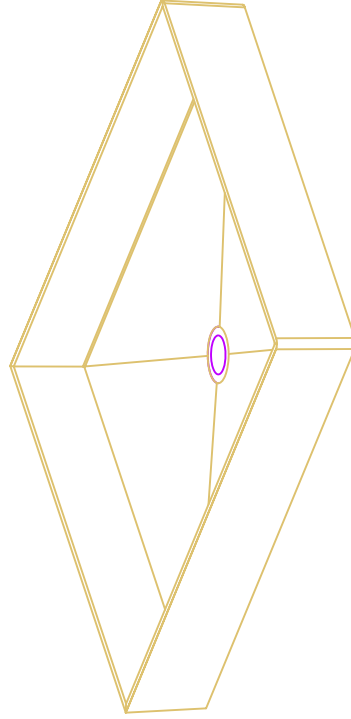
1/4" PITCH PER FOOT TO DRAIN

ADJUSTABLE THREADED  
DRAIN TOP WITH 4"  
ROUND CHROME POLISHED  
PLATE

6" SIDE WALLS  
1/2" WIDE TO ACCOMMODATE  
1/2" WALL BOARD



SECTION A-A



MAT'L: BAYER BAYDUR 645/649  
 POLYURETHANE STRUCTURAL FOAM FOR (RIM)  
 PART VOLUME: 1166 CU/IN  
 NOMINAL WALL THICKNESS .50"  
 ALL PART IDENTIFICATION CHARACTERS TO BE RECESSED .04



MODEL # 4837BASIN 120706	CONTACTS
CERTIFICATION/STANDARDS	toll free: (800) 232-6156
ICC/ANSI A117.1-98	tel: (954) 323-0125
ANSI 2.124	fax: (954) 344-8064
ASTM F462-79	



- 
1. **4837** 48 x 37" Barrier Free opening intergraded floor drain (Set and Tile)
  2. **3248** 32 x 48" Barrier Free opening intergraded floor drain (Set and Tile)
  3. **4348** 43 x 48" Barrier Free opening intergraded floor drain (Set and Tile)

Please contact our office if you are looking for a Tile Redi ADA model that is not listed above. Tile Redi will be designing and building additional models for ADA in the coming months ahead.

If a project that has interest in a model that is not listed, please contact our sales team 800-232-6156.



## Custom Shower Pan

---

Tile Redi can design any shower pan that is requested on the market. In order to fill a custom model, please note that a minimum order of each size must be 250 units or more. If the size you are requesting is somewhat close to our standard models let's see if our design team can assist in making that model work for your application. Custom volume orders can be combined in different phases. If phase one will be a replica of the other phases or buildings that may be specifying the same shower size, take these numbers into consideration.

For immediate assistance in pricing a custom project, please contact our sales team 800-232-6156



Perfection through Innovation

## **Modular Shower Pans Curbs and Benches**

---

From our existing sizes of shower pans, Tile Redi can mix and match sizes and curbs. With our innovative concept you can also sell modular shower benches to accommodate the specified choice.

Please contact our sales office for further questions regarding the modular Tile Redi system 800-232-6156

**UL Underwriters Laboratory**

Tile Redi shower pans are UL Listed (Underwriters Laboratory) as plastic plumbing fixtures. Tile Redi shower pans comply with and are intended for installation in accordance with local model plumbing codes such as the Uniform Plumbing Code (UPC) and the International Plumbing Code (IPC).



**Tile Redi shower pans meet the following standards and requirements in the United States:**

ANSI Z.124.2-95  
ICC/ANSI A117.1-98  
ASTM F.462-79



**Tile Redi shower pans meet the following standards and requirements in Canada.**

CNL  $\text{\textcircled{D}}$  Canadian Standard CSA Standards No. B45.0-02 and B45.5-02)

**1. Receptor – Polyurethane, manufactured by Bayer Material Science.**

[www.bayermaterialscience.com](http://www.bayermaterialscience.com)

**TESTING**

Drain Fitting Test:

**Method**

A weight of 50+1 lb is applied to the drain and hung in three radial positions, two which are 190 degrees apart for 1 minute. Water and Inks are applied and dried. These areas are then examined for visible cracks.

POINT IMPACT LOAD TEST:

**Method**

A 1.5 in dia., 0.5 lb steel ball is dropped from 36" and 24" in height to three different points of the shower flat areas in the bottom of the units and three different points on the threshold. Water and Inks are applied and dried. These areas are then examined for visible cracks.

LOADS, THRESHOLD AND BOTTOM TEST:

**Method**

A pre-load weight of 300+ 5lbs is applied to the center of the bottom of the unit on a weight distribution disk. Three inches in diameter, covered by a 0.5 in thickness of sponge rubber, between the disk and the surface being loaded. This load is left in place for 2-3 minutes. This load is then removed.

The load was reapplied 15 minutes after removing pre-load for 1-2 minutes. This load was placed in the center of the unit. The deflection under this applied load was measured.

After the load was removed the unit was inspected for cracks after inking. This is in accordance with Unit Preparation / Surface Inspection Test.

RADII LOAD TEST:

**Method**

A nylon rod was passed over all outside radii using approx 10lbs of pressure at an angle tangent to the radius.

These areas of impact were inked and dried. The area was examined for visible cracks.

IGNITION TEST:

**Method**

Five test specimens were subjected to the Ignition Test described in ANSI Z124-2-1995 Section 5.6. The test specimen was mounted in a vertical position in a draft free fume hood. A propane torch was used and adjusted to produce a blue flame 25.4 mm (1in) long. The tip of the flame was applied at a 45 degree angle on the opposite side center of the unit. Each specimen was subjected to two 30 s applications of the test flame with 60 s between applications.

For any additional information please contact 800-232-6156 or e-mail us at [techsupport@tileredi.com](mailto:techsupport@tileredi.com)



## XHEZ.F-C-2351 Through-penetration Firestop Systems

Page Bottom

### Through-penetration Firestop Systems

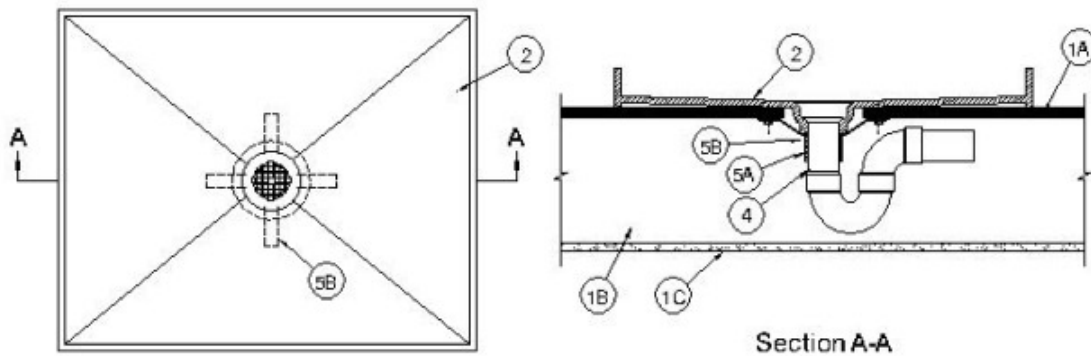
See General Information for Through-penetration Firestop Systems

#### System No. F-C-2351

April 18, 2007

**F Rating — 1 Hr**

**T Rating — 1 Hr**



1. **Floor-Ceiling Assembly** — The 1 hr fire-rated wood joist floor-ceiling assembly shall be constructed of the materials and in the manner specified in the individual L500 Designs in the UL Fire Resistance Directory, as summarized below:

A. **Flooring System** — Lumber or plywood subfloor with finish floor of lumber, plywood or **Floor Topping Mixture\*** as specified in the individual Floor-Ceiling Design. Max diam of opening is 6 in. (152 mm).

B. **Wood Joists** — Nom 10 in. (254 mm) deep (or deeper) lumber, steel or combination lumber and steel joists, trusses or **Structural Wood Members\*** with bridging as required and with ends firestopped.

C. **Gypsum Board\*** — Thickness, type, number of layers and fasteners as required in the individual Floor-Ceiling Design.

2. **Plastic Plumbing Fixtures+ - Shower Base Receptor** — One-piece molded nonmetallic shower base receptor with stainless steel drain plate. Shower base receptor to be installed in accordance with the manufacturer's instructions.

**TILE-REDI LTD** — Model 3360L, 3360R, 37NEO, 3737, 4837, 4837ADA, 4837MB or 4848

3. **Tile** — (Not Shown) - Ceramic or stone tile applied to shower pan floor with epoxy adhesive in accordance with shower base receptor installation instructions.

4. **Nonmetallic Pipe** — Nom 2 in. (51 mm) diam Schedule 40 solid or cellular core PVC pipe solvent-welded into drain in the bottom of the shower base receptor and centered in the floor opening.

5. **Firestop System** — The details of the firestop system shall be as follows:

A. **Fill, Void or Cavity Materials\* - Wrap Strip** — Nom 1/8 in. (3.2 mm) thick intumescent

material supplied in 2 in. (51 mm) wide strips. Single layer of wrap strip tightly wrapped around nonmetallic drain pipe (Item 4) with a butted seam and with the top edge of the wrap strip abutting the hub of the shower drain. Wrap strip layer temporarily held in position using tape.

**3M COMPANY** — Ultra GS

B. **Steel Collar** — Nom 2 in. (51 mm) deep collar with 1-1/4 in. (32 mm) wide by 2 in. (51 mm) long anchor tabs and tabs to retain wrap strip layer. Coils of precut 0.016 in. (0.41 mm) thick (28 gauge) galv sheet steel available from wrap strip manufacturer. Steel collar, with anchor tabs bent outward 90 deg, wrapped tightly around wrap strip with min 1 in. (25 mm) overlap at seam. Anchor tabs to be pressed tightly against hub of shower drain and collar to be compressed around wrap strip using a min 1/2 in. (13 mm) wide stainless steel clamp at the collar midheight. Collar to be secured to underside of flooring system with steel screws with min 1-1/4 in. (32 mm) diam steel washers in conjunction with steel extension straps. Hanger tab extension straps to be fabricated from min 0.022 in. (0.6 mm) thick galv sheet steel. Taper straps from 1/4 in. (6 mm) wide to 1 in. (25 mm) wide with sufficient length to allow 1-1/2 to 2 in. (38 to 51 mm) lap onto floor. Straps secured to collar by inserting min 1 in. (25 mm) length of 1/4 in. (6 mm) wide end into hole on mounting tab and bending 180 degrees. Min of two anchor screws, diametrically opposed, are required.

\*Bearing the UL Classification Mark

Last Updated on 2007-04-18

[Questions?](#)

[Notice of Disclaimer](#)

[Page Top](#)

[Copyright © 2007 Underwriters Laboratories Inc.®](#)

The appearance of a company's name or product in this database does not in itself assure that products so identified have been manufactured under UL's Follow-Up Service. Only those products bearing the UL Mark should be considered to be Listed and covered under UL's Follow-Up Service. Always look for the Mark on the product.

UL permits the reproduction of the material contained in the Online Certification Directory subject to the following conditions: 1. The Guide Information, Designs and/or Listings (files) must be presented in their entirety and in a non-misleading manner, without any manipulation of the data (or drawings). 2. The statement "Reprinted from the Online Certifications Directory with permission from Underwriters Laboratories Inc." must appear adjacent to the extracted material. In addition, the reprinted material must include a copyright notice in the following format: "Copyright © 2007 Underwriters Laboratories Inc.®"

An independent organization working for a safer world with integrity, precision and knowledge.





## XHEZ.F-A-2175 Through-penetration Firestop Systems

Page Bottom

### Through-penetration Firestop Systems

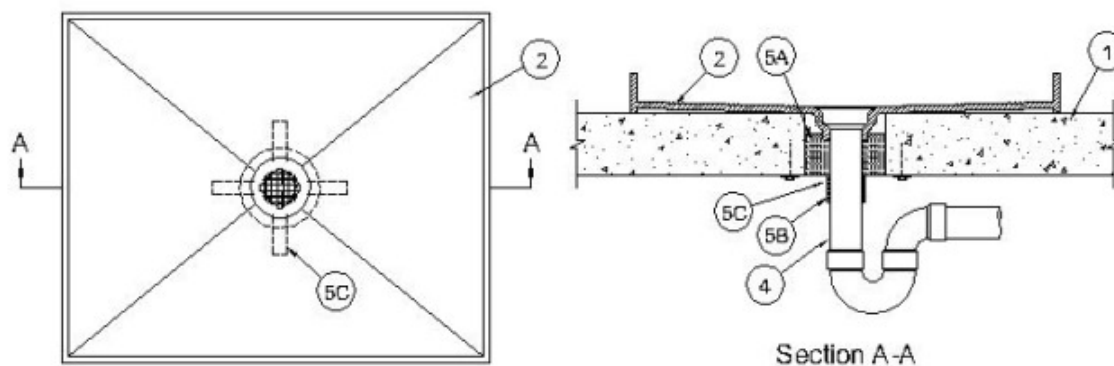
See General Information for Through-penetration Firestop Systems

#### System No. F-A-2175

April 18, 2007

**F Rating — 2 Hr**

**T Rating — 2 Hr**



1. **Floor Assembly** — Min 4-1/2 in. (114 mm) thick lightweight or normal weight (100-150 pcf or 1600-2400 kg/m<sup>3</sup>) concrete. Max diam of opening is 6 in. (152 mm).

2. **Plastic Plumbing Fixtures+ - Shower Base Receptor** — One-piece molded nonmetallic shower base receptor with stainless steel drain plate. Shower base receptor to be installed in accordance with the manufacturer's instructions.

**TILE-REDI LTD** — Model 3360L, 3360R, 37NEO, 3737, 4837, 4837ADA, 4837MB or 4848

3. **Tile** — (Not Shown) - Ceramic or stone tile applied to shower pan floor with epoxy adhesive in accordance with shower base receptor installation instructions.

4. **Nonmetallic Pipe** — Nom 2 in. (51 mm) diam Schedule 40 solid or cellular core PVC pipe solvent welded into drain in the bottom of the shower base receptor and centered in the floor opening.

5. **Firestop System** — The details of the firestop system shall be as follows:

A. **Packing Material** — Min 3 in. (76 mm) thickness of min 4 pcf (64 kg/m<sup>3</sup>) mineral wool batt insulation firmly-packed into annular space as a permanent form, flush with bottom surface of concrete floor.

B. **Fill, Void or Cavity Materials\* - Wrap Strip** — Nom 1/8 in. (3.2 mm) thick intumescent material supplied in 2 in. (51 mm) wide strips. Single layer of wrap strip tightly wrapped around nonmetallic drain pipe (Item 4) with a butted seam and with the top edge of the wrap strip abutting the packing material. Wrap strip layer temporarily held in position using tape.

**3M COMPANY** — Ultra GS

C. **Steel Collar** — Nom 2 in. (51 mm) deep collar with 1-1/4 in. (32 mm) wide by 2 in. (51 mm) long anchor tabs and tabs to retain wrap strip layer. Coils of precut 0.016 in. (0.41 mm) thick (28 gauge) galv sheet steel available from wrap strip manufacturer. Steel collar, with anchor tabs bent outward 90 deg, wrapped tightly around wrap strip with min 1 in. (25 mm) overlap at seam. Anchor tabs to be pressed tightly against bottom of packing material, and collar to be compressed around wrap strip using a min 1/2 in. (13 mm) wide stainless steel clamp at the collar midheight. Collar to be secured to underside of concrete floor with steel concrete screws with min 1-1/4 in. (32 mm) diam steel washers in conjunction with steel extension straps. Hanger tab extension straps to be fabricated from min 0.022 in. (0.6 mm) thick galv sheet steel. Taper straps from 1/4 in. (6 mm) wide to 1 in. (25 mm) wide with sufficient length to allow 1-1/2 to 2 in. (38 to 51 mm) lap onto floor. Straps secured to collar by inserting min 1 in. (25 mm) length of 1/4 in. (6 mm) wide end into hole on mounting tab and bending 180 degrees. Min of four anchor screws, symmetrically located, are required.

\*Bearing the UL Classification Mark

Last Updated on 2007-04-18

[Questions?](#)

[Notice of Disclaimer](#)

[Page Top](#)

Copyright © 2007 Underwriters Laboratories Inc.®

The appearance of a company's name or product in this database does not in itself assure that products so identified have been manufactured under UL's Follow-Up Service. Only those products bearing the UL Mark should be considered to be Listed and covered under UL's Follow-Up Service. Always look for the Mark on the product.

UL permits the reproduction of the material contained in the Online Certification Directory subject to the following conditions: 1. The Guide Information, Designs and/or Listings (files) must be presented in their entirety and in a non-misleading manner, without any manipulation of the data (or drawings). 2. The statement "Reprinted from the Online Certifications Directory with permission from Underwriters Laboratories Inc." must appear adjacent to the extracted material. In addition, the reprinted material must include a copyright notice in the following format: "Copyright © 2007 Underwriters Laboratories Inc.®"

An independent organization working for a safer world with integrity, precision and knowledge.





**BAYDUR 645**

**Reactivity Data**

Isocyanate Component A		Baydur 645 Comp A
Polyol Component B		Baydur 645 Comp B
<b>Weight</b>		
Component A	118	
Component B	100	
<b>Component A</b>		
Viscosity @ 25°C (cps)	200	
Specific Gravity	1.23	
<b>Component B</b>		
Viscosity @ 25°C (cps)	1,200	
Specific Gravity	1.04	
Mold Temperature °C (°F)	50 – 60	(122 -140)
Chemical Temperature °C (°F)	29 – 38	(84 - 100)
Polyol Nucleation (Sp Grav)	0.80 – 0.90	
Typical Cure Time @ 0.500" (min)	4 – 5	
Typical Molded Density (pcf)	10 – 30	
<b>Machine Reactivity</b>		
Chemical Temperature °C (°F)	30	(86)
Cream Time (sec)	10 – 20	
Gel Time (sec)	30 – 40	
Tack Time (sec)	50 – 60	
Free Rise Density (pcf)	4.5 – 5.5	
<b>Hand Mix Reactivity</b>		
Chemical Temperature °C (°F)	25	(77)
Cream Time (sec)	30 – 40	
Gel Time (sec)	65 – 75	
Tack Time (sec)	77 – 85	
Free Rise Density (pcf)		

<b>Thickness (in) 0.250</b>				
Density (pcf)	15	20	25	30
Hardness D scale	28	37	46	55
Flexural Modulus (psi)	32,000	44,000	67,000	83,000
Flexural Strength (psi)	950	1,200	2,000	2,400
Tensile Strength (psi)	560	880	1,200	1,740
Elongation (%)	7	7	7	7
Charpy Impact (ft-lb/in <sup>2</sup> )	1.8	2.5	3.5	4.2
Compressive Strength (psi)	430	650	1,140	1,500

<b>Thickness (in) 0.500</b>				
Density (pcf)	15	20	25	30
Hardness D scale	30	39	49	55
Flexural Modulus (psi)	27,000	36,000	64,000	75,000
Flexural Strength (psi)	1,000	1,300	2,400	2,900
Tensile Strength (psi)	550	900	1,100	1,500
Elongation (%)	9	9	9	9
Charpy Impact (ft-lb/in <sup>2</sup> )	1.9	2.5	3.8	4.3
Compressive Strength (psi)	275	550	1,100	1,500

To help guide you through the shower pan installation process, we have provided the following Installation Guide. Our installation guide is intended to provide an easy to follow step by step process for the installation of your Tile Redi shower pan, whether you are a professional or a first time novice. Accompanying each step is a corresponding picture for your convenience. For those of you who prefer videos, you can also view a video of an actual installation of a Tile Redi shower pan by visiting our Installation video! All installations should be in accordance with the standards established by the Tile Council of North America Inc.

### **Step 1**

Measure the distance from the outer edges of the shower pan to the center of the drain hole. For existing shower stalls, line up the drains. New construction bore a 6" hole in the corresponding spot on the floor in the framed-in shower stall.

### **Step 2**

Cut a section of PVC drain pipe. Brush PVC glue on the end that will be inserted into the bottom of the shower pan. If you have no access to the shower pan from underneath the shower stall sub-floor, stub pipe up above shower stall sub-floor.

### **Step 3**

Brush PVC glue on the inside of the drain in the shower pan.

### **Step 4**

Insert the drain pipe into the shower pan.

### **Step 5**

Sweep out the shower stall area. Apply construction adhesive or a bed of foundation material to the shower stall sub floor. Be careful to ensure that adhesive or mud will contact all areas of the underside of the shower pan.

### **Step 6**

Add a bead of the adhesive to the underside of the front side of the shower pan curb.

### **Step 7**

Place the shower pan carefully into position. The drainpipe should extend through the shower stall floor to an area below the point at which it can be conveniently plumbed into the gray water system. If you do not have access from underneath the shower stall floor to the shower pan drain, stub up pipe above ground.

### **Step 8**

Make sure the shower pan is aligned properly and fits snugly against the frame work on all sides of the shower stall.



## Installation Guide

### Step 9

Step onto the shower pan and the shower pan threshold and use your bodyweight to press it into place. Press down firmly on the shower pan curb to ensure a good seal.

### Step 10

Make sure the shower pan is level in all directions. This is necessary to ensure proper drainage of shower water. Shim to level if necessary.

### Step 11

After leveling the shower pan, place a bead of waterproof adhesive on the top of the three inside edges of the shower pan to facilitate a watertight seal of the shower pan to the wallboard.

### Step 12

Install your wallboard.

### Step 13

Mud and waterproof caulk or tape the wallboard joints.

### Step 14

Measure up the shower stall wall the height of two rows of tile from the tile surface of the shower pan floor. Draw level lines on the shower walls.

### Step 15

Apply adhesive and install the tile or marble on the shower stall walls.

### Step 16

Rough the surface of the shower pan with sandpaper.

### Step 17

Adjust the height of the shower pan drain as necessary to accommodate the ceramic tile or marble.

### Step 18

Lay out your ceramic tile or marble design for the shower pan floor.

**Step 19** Apply **Laticrete®** (Latapoxy® **300 Epoxy Adhesive**) or equivalent to the shower pan floor.

### Step 20

Install the tile or marble on the shower pan floor.

**Admire your Work**  
**For Technical Support please contact**  
**800-232-6156**